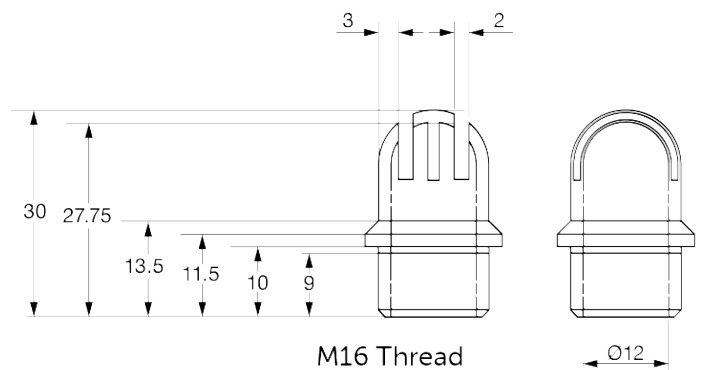


PRODUCT OVERVIEW

Our range of temperature sensors is designed to interface with Ambiente thermostats. Sensors are housed in a white plastic button or thimble shaped enclosure, stainless steel versions are also available. Each sensor is designed to be mounted on a back mounting plate or simply drill a hole suitable for the correct sized thread, pass the cable through the hole, secure with the fixing nut provided and then terminate the cable as required.

The sensors have been designed for mounting in walls, joinery or mounting plates. We recommend that sensors are installed by a qualified technician in conjunction with any guidelines for the equipment it is being connected to. As a general rule, screened cable should be used to connect the sensor to the controller.

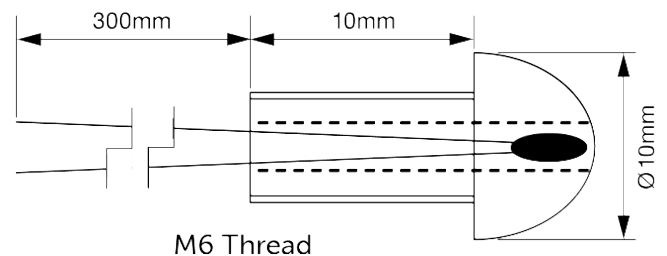
Dimensions (millimetres) Thimble Sensor



TECHNICAL SPECIFICATION

- Sensor Type:** Thermistor element
- Accuracy:** ±0.2°C, 0... 70°C
- Housing:** White plastic or stainless steel
- Protection:** IP30
- Termination:** 300mm of PVC flying lead
- Ambient:** 0°C to +50°C, 0-95% RH non-condensing

Dimensions (millimetres) Button Sensor



ORDER CODES

- 43672** - White Plastic Button Temperature Sensor -10KΩ @ 25°C
- 43673** - Stainless Steel Button Temperature Sensor -10KΩ @ 25°C
- 43674** - White Plastic Button Temperature Sensor on Single Gang Plate -10KΩ @ 25°C
- 43640** - White Plastic Thimble Temperature Sensor -10KΩ @ 25°C
- 43670** - Stainless Steel Thimble Temperature Sensor -10KΩ @ 25°C

THERMISTOR TEMPERATURE RANGE

Thermistor, temp coef. -ve		Thermistor, temp coef. -ve		Thermistor, temp coef. -ve		Thermistor, temp coef. -ve		Thermistor, temp coef. -ve	
Temp°C	Ω	Temp°C	Ω	Temp°C	Ω	Temp°C	Ω	Temp°C	Ω
-10	55298	6	24173	14	16465	22	11420	30	8056
-5	42314	7	23016	15	15714	23	10923	35	6530
0	32650	8	21921	16	15001	24	10450	40	5325
1	31030	9	20885	17	14325	25	10000	45	4367
2	29500	10	19904	18	13623	26	9572	50	3601
3	28054	11	18974	19	13053	27	9165	55	2985
4	26688	12	18092	20	12494	28	8777		