



## Product Overview

Tailtape is an innovative and proven way of insulating tail pipework on underfloor heating systems. When a loop of pipework runs from the manifold to a given zone, it often runs through another area in order to reach its destination. The idea behind insulating the tail pipework is to minimise the dispersion of heat, until it reaches the desired area to be heated.

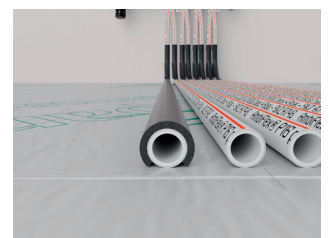
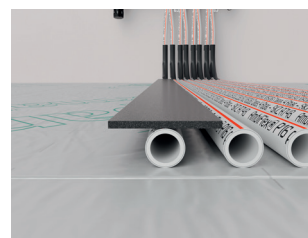
Ambiente recommends installing TailTape when UFH is installed within a screed, on all flow & return pipework between the manifold & the heating zone. It should be laid over the top of pipework, as per the images shown.

TailTape is a self-adhesive rubber foam tape, consisting of closed-cell structure, giving very high mould resistance and elastomeric thermal insulating properties. Through independent testing carried out by Ambiente, we have proved that this method of insulating tail pipework is more effective than the traditional method of using a clip-on split plastic conduit. This is especially the case with a flowing screed, where the screed can flow inside the split conduit and result in very little if any thermal insulation.

**"AMBIENTE RECOMMENDS INSTALLING TAILTAPE WHEN UFH IS INSTALLED WITHIN A SCREED, ON ALL FLOW & RETURN PIPEWORK FROM THE MANIFOLD, UNTIL IT REACHES THE HEATING ZONE"**

## Benefits

- Time-saving installation
- Closed-Cell structure
- High mould resistance
- Elastomeric thermal insulating properties
- Reduces heat transfer by 30%
- Simple and reliable to use



Suitable for use with AmbiTak & AmbiClip systems

