



ambiente®

AMBIDECK®

INSTALLATION GUIDE

Customer:

Project:

Project Reference:

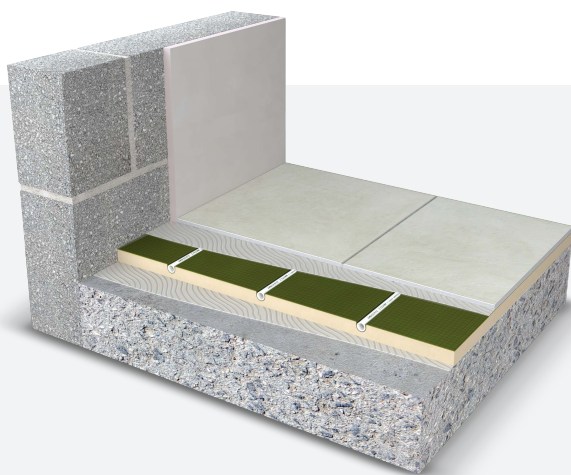
Date:

AMBIDECK®

This product is a unique combination of a low-profile Underfloor Heating system, which can be tiled directly onto, and a layer of thermal insulation.

It is critical that the installation guide is followed exactly, to avoid potential future damage to floor finishes.

Regardless of the type of sub-floor, it is critical that it is both flat and level. As the system is low-profile, there is no scope to 'lose' any imperfections in the floor within the boards themselves. Undulations and imperfections in the floor surface will likely cause challenges for laying the floor coverings.



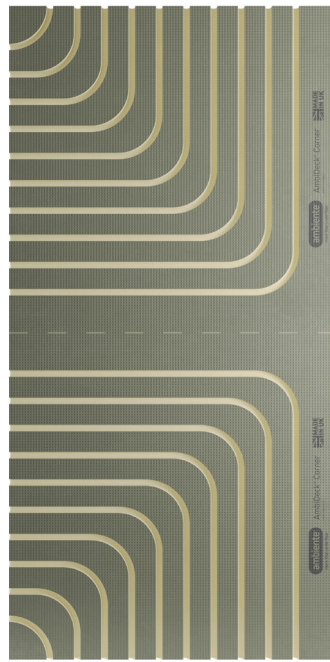
AmbiDeck® on concrete floor



AmbiFibre levelling compound is compatible with the AmbiDeck®



46170
AmbiDeck®
 1.2 x 0.6 m - 18 mm thick



46171
AmbiDeck® Highway
 1.2 x 0.6 m - 18 mm thick



46172
AmbiDeck® Cornerboard
 1.2 x 0.6 m - 18 mm thick

**FOR MORE HELP AND ADVICE,
 CONTACT OUR TEAM OF HIGHLY
 TRAINED EXPERTS TODAY.**

Ambiente goes beyond just simply the supply of underfloor heating systems.

At every stage in the project, we offer advice to all parties, in order to assist in the swift, safe and supportive implementation of your project. From project initiation to final commissioning, Ambiente have every stage of underfloor heating covered.



Visit us online at ambienteufh.co.uk for case studies, product resources and more information.



For any installation questions speak to our installation team today on **01707 649 118** or email info@ambienteufh.co.uk



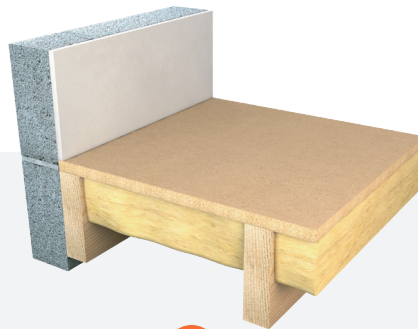
For any information regarding our products and support call our highly trained sales team today on **01707 649 118**

TIMBER FLOOR

When fitting the AmbiDeck® over a structural timber floor, the boards should be laid over the entire floor area. Boards are fixed directly to the timber deck, with AmbiDeck® washers and screws. We recommend using 9 fixings per board to ensure a firm fixing, prior to tiling. The panels are universal, with radius return bends in one end.

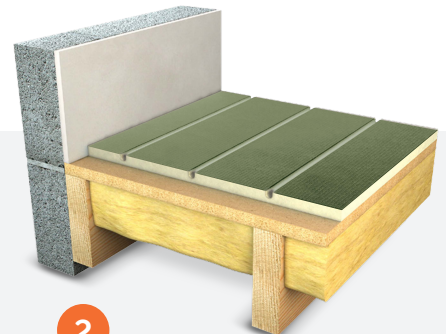
See diagram below to show configuration of boards;

INSTALLATION: STEP BY STEP



1

Ensure working area is swept, clean and stable.

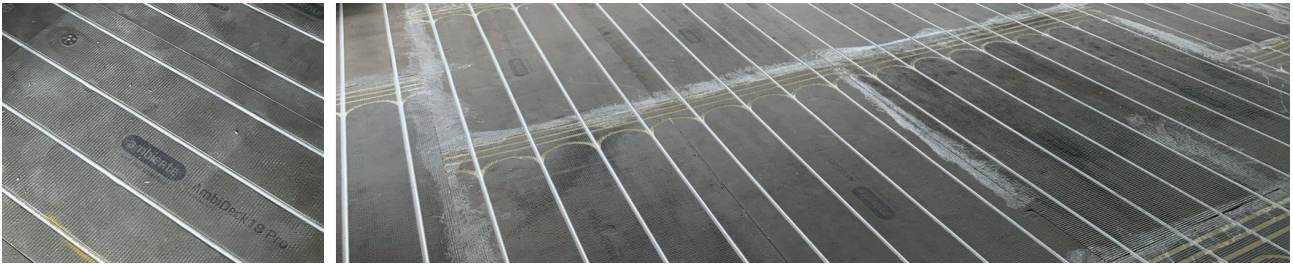


2

Lay the AmbiDeck® panels down across the entire area, making sure that the radius return falls in the correct place at the end of each room.

TIMBER FLOOR

INSTALLATION: STEP BY STEP GUIDE



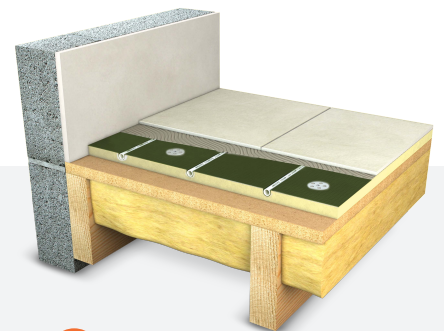
3

Fix the AmbiDeck® panels down with approx. 9 - 12 specialist screws and washers per panel.



4

Fit the UFH pipework down into the panels, following the pipework layout on the UFH design supplied.



5

Tiling can be laid directly over the system – we recommend priming the boards with a tiling primer, as well as filling any gaps with flexible tiling adhesive. If laying carpet/vinyl/ wooden floor we recommend 6 mm levelling compound over the top of AmbiDeck®.

CONCRETE FLOOR

When fitting the AmbiDeck® over a structural concrete floor, the boards should be laid over the entire floor area.

If required, the floor will need levelling with a suitable latex, prior to the boards being laid.

Boards are adhered to the concrete floor, using a combed bed of flexible tiling adhesive. If the surface of the floor is dusty or inconsistent, we recommend using a tiling primer to seal the surface first.

The panels are universal, with radius return bends in one end. **See diagram below to show configuration of boards;**

INSTALLATION: STEP BY STEP



1

Ensure working area is swept, clean and stable. Concrete surfaces should be primed for best adhesion.

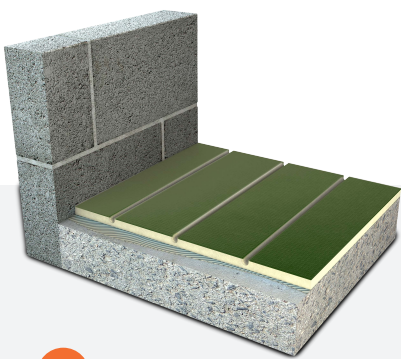


2

Lay a combed and even bed of flexible tiling adhesive across the area, prior to laying the AmbiDeck® panels.

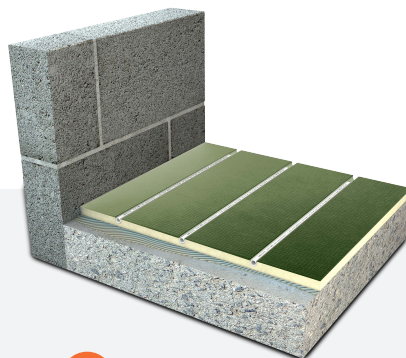
CONCRETE FLOOR

INSTALLATION: STEP BY STEP GUIDE



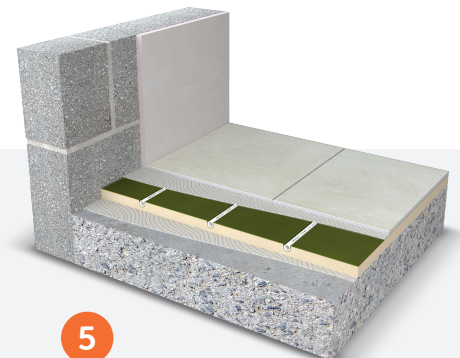
3

Lay the AmbiDeck® panels down across the entire area, making sure that the radius return falls in the correct place at the end of each room. Wait for the adhesive to dry, prior to proceeding with the next step.



4

Fit the UFH pipework down into the panels, following the pipework layout on the UFH design supplied.



5

Tiling can be laid directly over the system – we recommend priming the boards with a tiling primer, as well as filling any gaps with flexible tiling adhesive. If laying carpet/vinyl/ wooden floor we recommend 6 mm levelling compound over the top of AmbiDeck®.



ambiente[®]

more than underfloor

Need more information or advice?

Contact our team of highly trained experts today.

Call 01707 649 118

Email sales@ambienteufh.co.uk

Visit ambienteufh.co.uk



Ambiente Heritage House, 1 Woodside Lane, Bell Bar,
Hertfordshire AL9 6DE